

General Information

Location: BALEN BEL
ICAO: EBKH
Lat/Long: N51° 10.85', E005° 13.25'
Elevation: 123 ft

Airport Use: Public
Daylight Savings: Observed
UTC Conversion: -1:00 = UTC
Magnetic Variation: 1.0° E

Fuel Types: 100 Octane (LL)
Customs: No
Airport Type: VFR
Landing Fee: Yes
Control Tower: No
Jet Start Unit: No
LLWS Alert: No
Beacon: No
Traffic Pattern Altitude: 1123 ft (1000 ft AGL)

Sunrise: 0449 Z
Sunset: 1830 Z

Runway Information

Runway: 07
Length x Width: 2257 ft x 59 ft
Surface Type: grass
TDZ-Elev: 123 ft

Runway: 25
Length x Width: 2257 ft x 59 ft
Surface Type: grass
TDZ-Elev: 123 ft

Communication Information

Balen Radio: 120.310

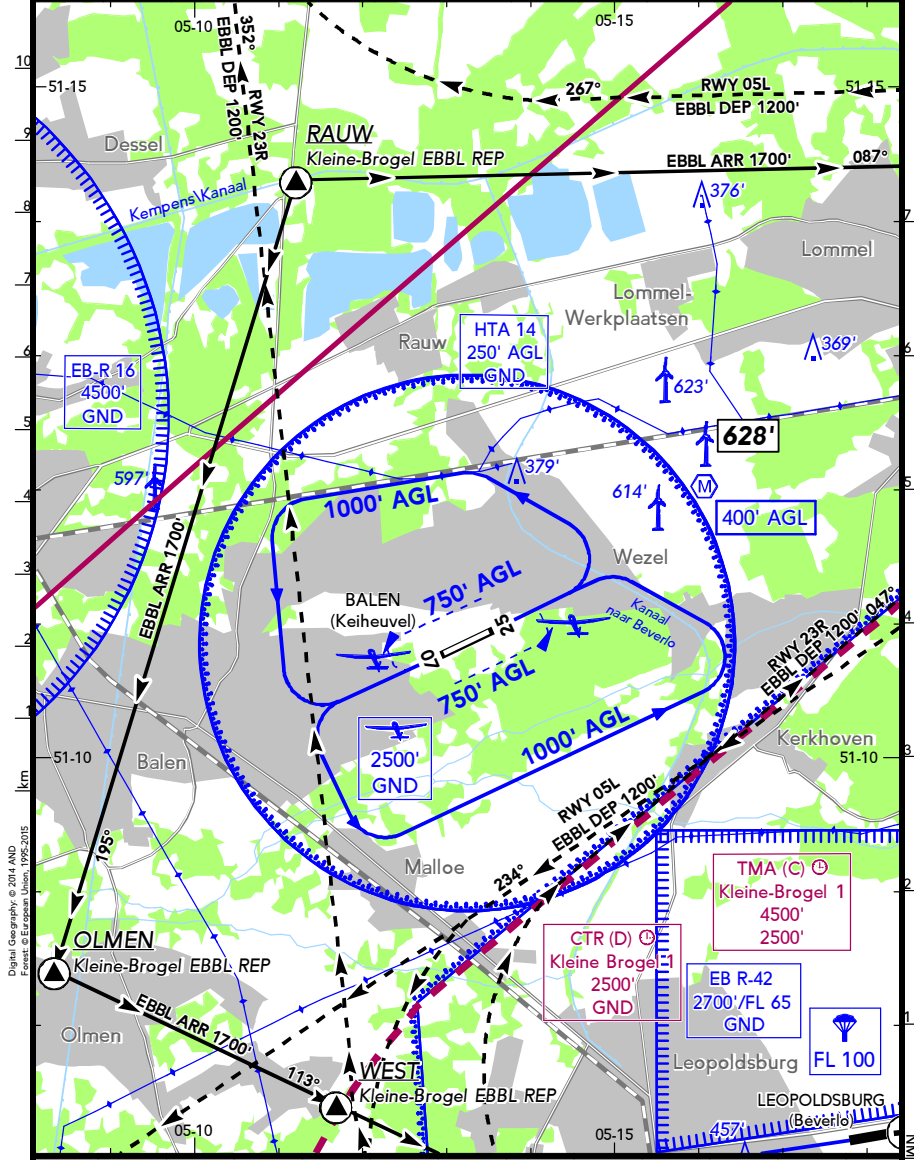
EBKH
KEIHEUVEL

13 DEC 19 (19-1)

BALEN
BELGIUM

| | |
|--|---|
| LOCATION Elev 131' /40m N51 10.9 E005 13.3 | FIS BELGA INFORMATION 129.325 ⁽¹⁾ BRUSSELS INFORMATION 126.900 ⁽²⁾ |
| | AIRSPACE KLEINE-BROGEL TOWER 134.105 ⁽³⁾ KLEINE-BROGEL APPROACH 134.480 ⁽⁴⁾ |

(1) MIL (2) CIV (3) Kleine-Brogel CTR (4) Kleine Brogel TMA




Digital Geography © 2014, AND
Content © Jeppesen, Inc. 1725-2015

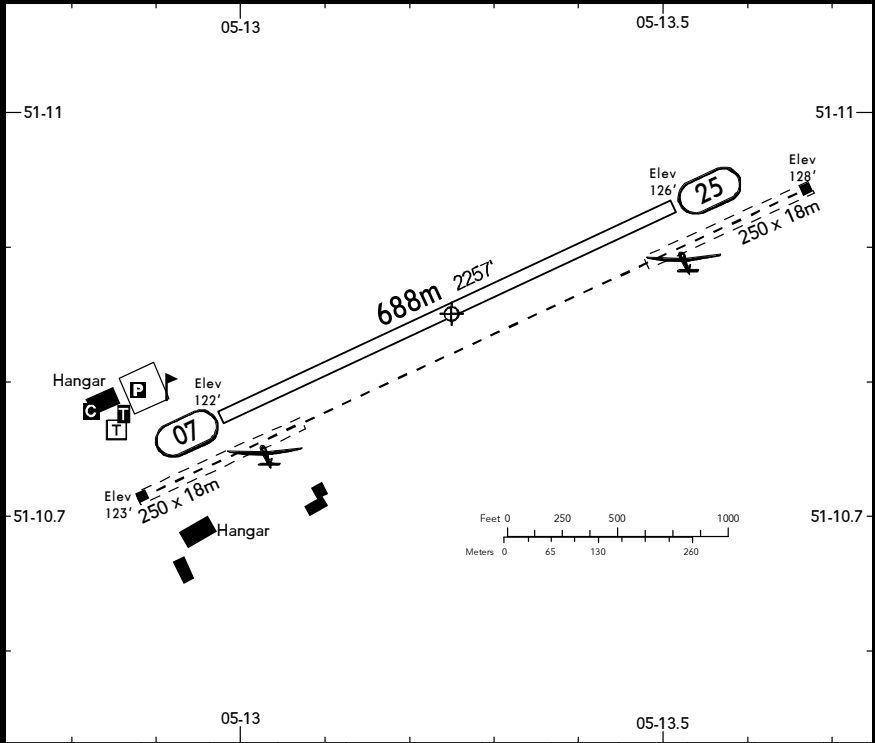
EBKH
KEIHEUVEL

13 DEC 19 **19-2**

BALEN
BELGIUM

BRIEFING STRIP™

| | | |
|--|--------------------------------------|---|
| LOCATION Elev 131' /40m N51 10.9 E005 13.3 | AFIS BALEN RADIO 120.310 (du, en) | ADMITTED AIRCRAFT  (Cable 2000' AGL) |
|--|--------------------------------------|---|



| RWY No | Dimension (m) - Surface | TORA (m) | LDA (m) | Strength | Lights |
|----------|-------------------------|----------|---------|----------|--------|
| 07 25 | 688 x 18 Grass | | | 5.7t AUW | --- |

AD prohibited for DPM (motorised deltaplanes).
 AD prohibited for ACFT powered by two-stroke engines.
 Be aware of gliders launched by winch and air-tow, up to 2000' AGL.
 Taxi N of RWY only.
 Avoid overflying the AD below 2000' AGL.
 Avoid overflying built-up areas near AD.