

Airport Information For EBKH

Printed on 01 Feb 2018

Page 1

(c) JEPPESEN SANDERSON, INC., 2018, ALL RIGHTS RESERVED

 JEPPESEN

JeppView for Windows

## General Information

Location: BALEN BEL  
ICAO: EBKH  
Lat/Long: N51° 10.8', E005° 13.2'  
Elevation: 131 ft

Airport Use: Public  
Daylight Savings: Observed  
UTC Conversion: -1:00 = UTC  
Magnetic Variation: 1.0° E

Fuel Types: 100 Octane (LL)  
Customs: No  
Airport Type: VFR  
Landing Fee: Yes  
Control Tower: No  
Jet Start Unit: No  
LLWS Alert: No  
Beacon: No  
Traffic Pattern Altitude: 1131 ft (1000 ft AGL)

## Runway Information

Runway: 07  
Length x Width: 2264 ft x 59 ft  
Surface Type: grass  
TDZ-Elev: 131 ft

Runway: 25  
Length x Width: 2264 ft x 59 ft  
Surface Type: grass  
TDZ-Elev: 131 ft

## Communication Information

Balen Radio: **120.310 AFIS**

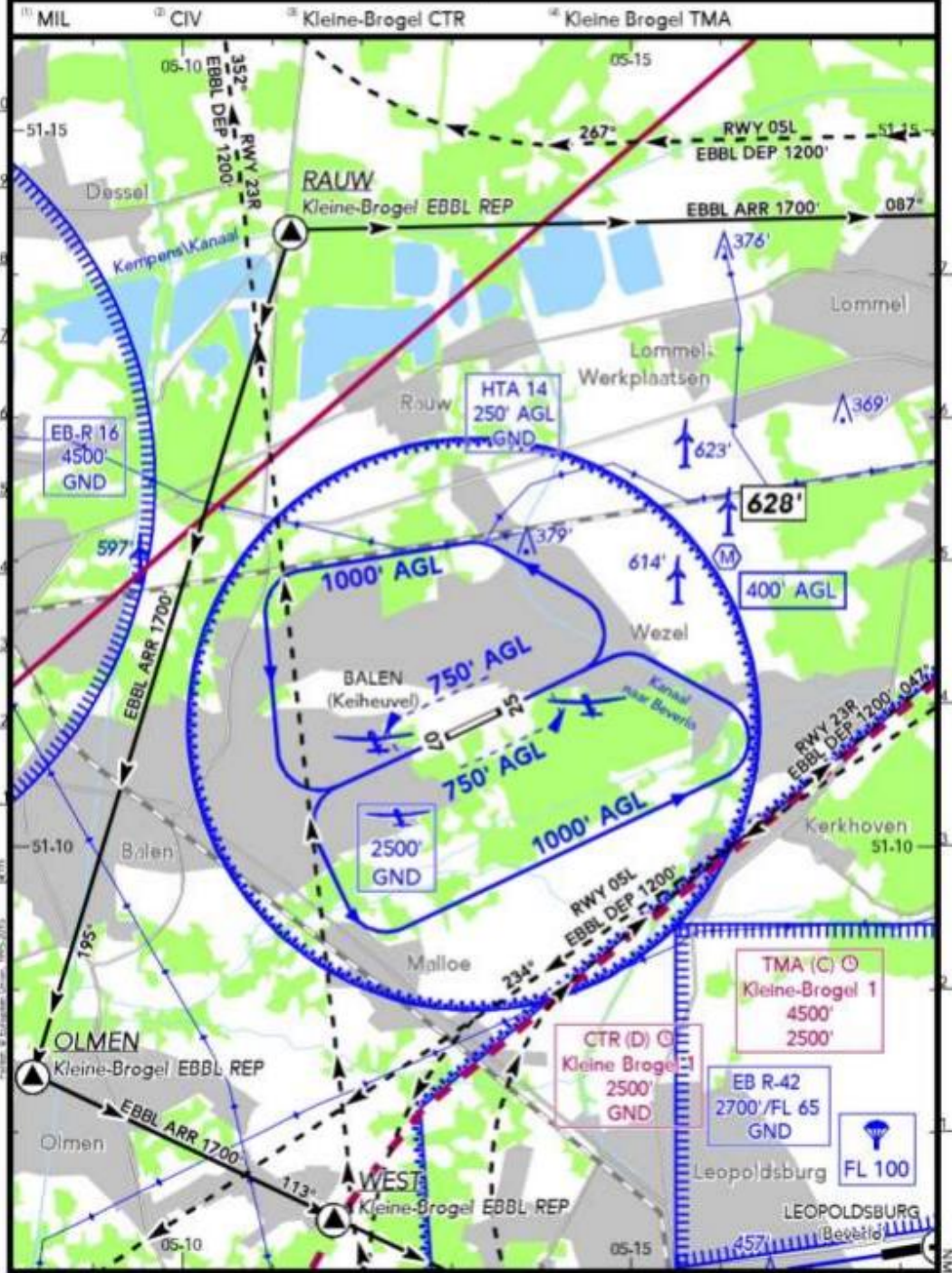


**EBKH**  
KEIHEUVEL

13 DEC 19 (19-1)

**BALEN**  
BELGIUM

BRIEFING STRIP	LOCATION Elev 131' /40m N51 10.9 E005 13.3	FIS BELGA INFORMATION 129.325 <sup>(1)</sup> BRUSSELS INFORMATION 126.900 <sup>(2)</sup>	VAR 1-E
	AIRSPACE KLEINE-BROGEL TOWER 134.105 <sup>(3)</sup> KLEINE-BROGEL APPROACH 134.480 <sup>(3)</sup>	AFIS BALEN RADIO 120.310 (du, en)	



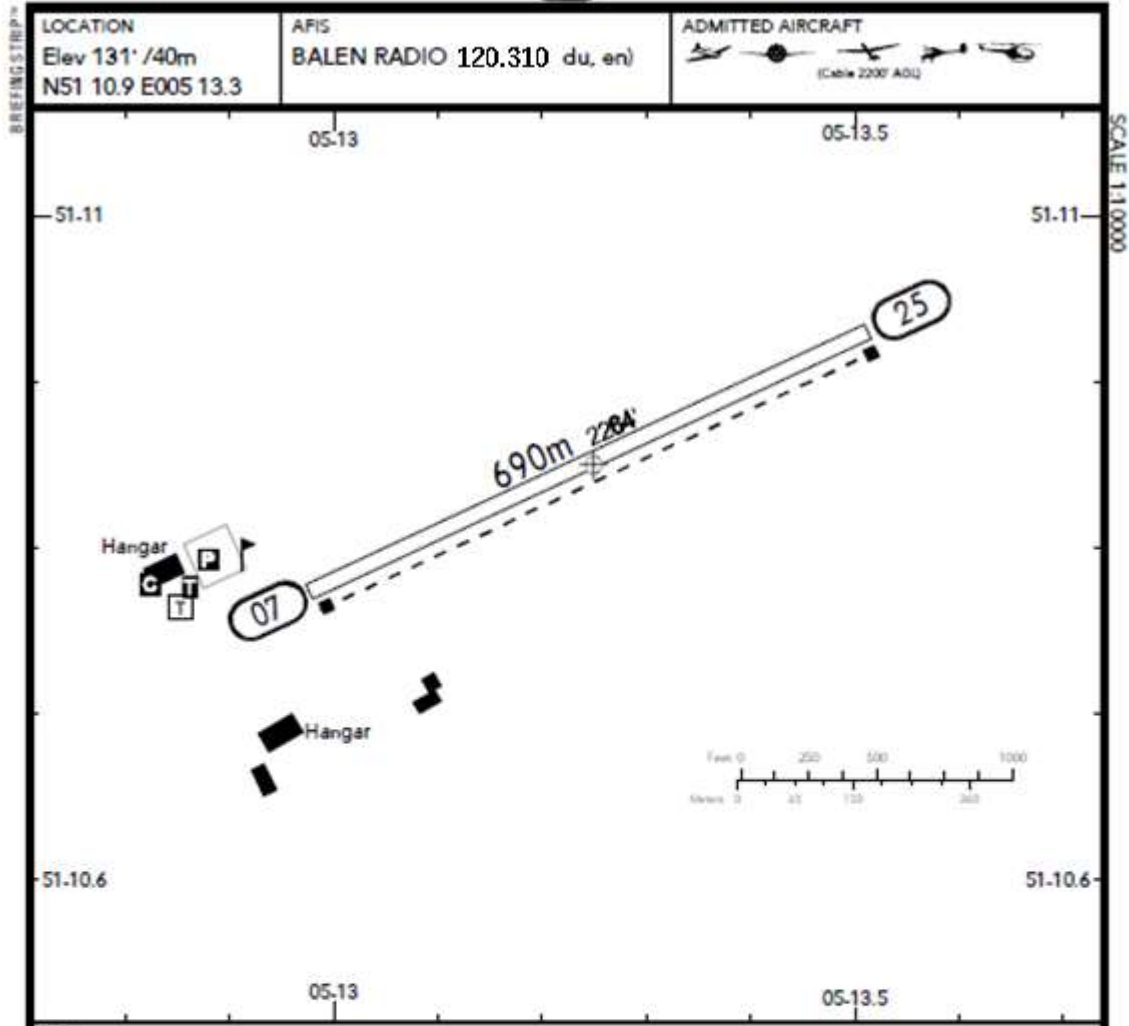
CHANGES: Airspace - REPs & Routes - Traffic Circuits. © JEPPesen 2017, 2019. ALL RIGHTS RESERVED

EBKH  
KEIHEUVEL

JEPPESEN

10 MAR 17 (19-2)

BALEN  
BELGIUM



RWY No	Dimension (m) - Surface	TORA (m)	LDA (m)	Strength	Lights
07 25	690 x 18 Grass	690	690	5.7t A UW	---

AD prohibited for DPM (motorised deltaplanes).  
 AD prohibited for ACFT powered by two-stroke engines.  
 Be aware of gliders launched by winch and air-tow, up to 2000' AGL.  
 Taxi N of RWY only.  
 Avoid overflying the AD below 2000' AGL.  
 Avoid overflying built-up areas near AD.